






# EM291D

## Digital weighing transmitter

EM291D is a digital industrial-grade weighing transmitter, communicate with digital load cells from Runningtech to achieve accurate weighing, transmission via industrial bus; OLED display screen supports chinese or english menu for operations. Shim-styled enclosure, 35mm rail-mounted to save installation space, support industrial bus of Profinet, EtherNet/IP, widely being applied onto various weighing fields.



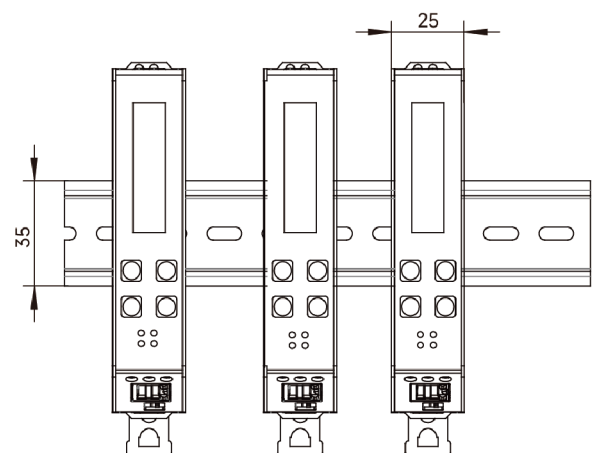
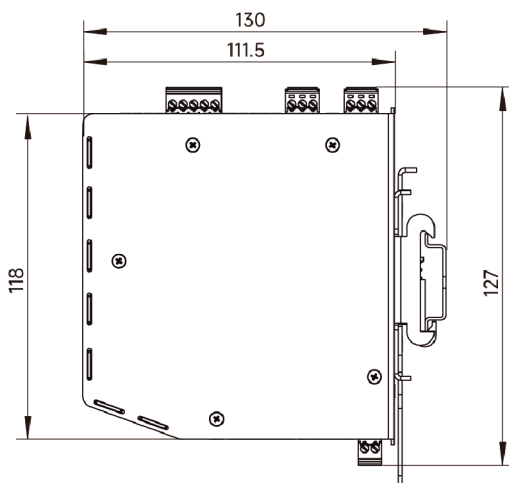
### Key features

- |  |  |
|--|--|
|  <b>Enclosure design</b>                  | <ul style="list-style-type: none"> <li>• stainless steel shim-styled design, 35mm rail-mounted installation</li> </ul>         |
|  <b>Menu configuration</b>                | <ul style="list-style-type: none"> <li>• support english or chinese version, key-operated</li> </ul>                           |
|  <b>Corner error correcting</b>         | <ul style="list-style-type: none"> <li>• Auto-adjustment</li> </ul>  |
|  <b>Digital load cells' information</b> | <ul style="list-style-type: none"> <li>• Indications of internal counts, diagnosis of each digital load cells, etc</li> </ul>  |
|  <b>Communication Protocols</b>         | <ul style="list-style-type: none"> <li>• Serial port: RS232, RS485</li> <li>• Industrial bus: Profinet, EtherNet/IP</li> </ul> |



### Dimensions

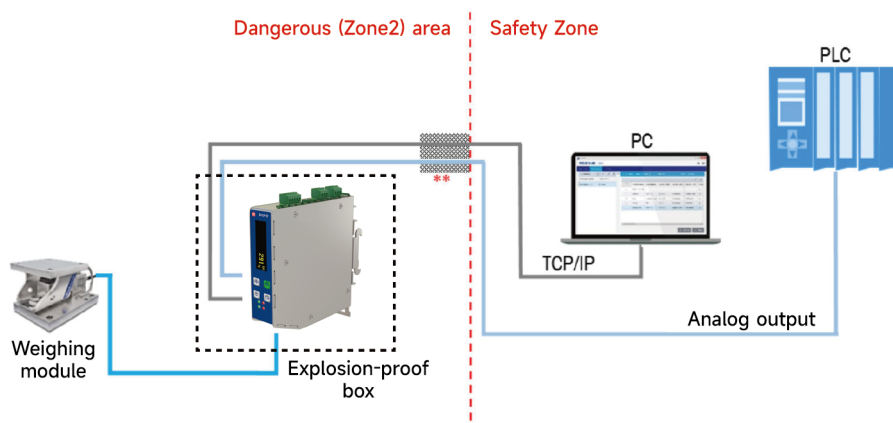
Unit: mm



## Specifications

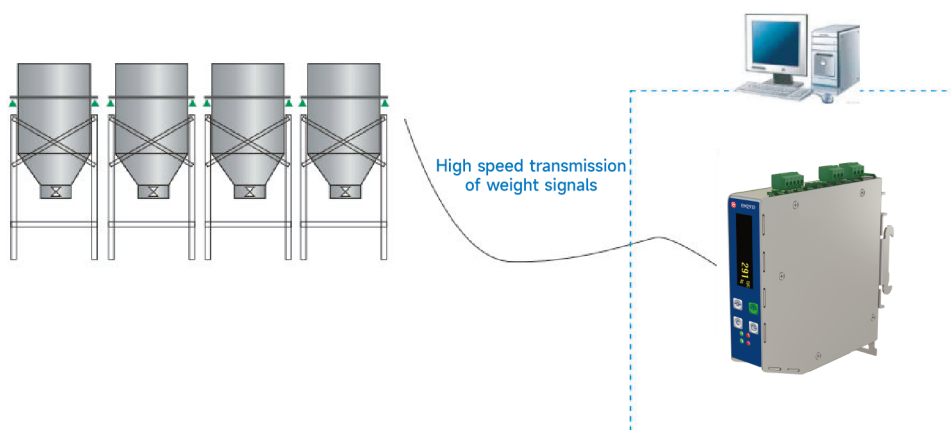
Product model	EM291D
DC Power	24VDC
Usage temperature	-20 ~ +60
Display screen	1.71 inch OLED dot matrix display
Number of verification scale intervals (d)	10000
Number of indication scale intervals (d)	100000
Number of load cells	Up to 4pcs digital load cell
Interface with digital load cell	CAN
Protocol	CANOpen
Encrypting digital load cell	Available
Accuracy class	III
KeyPad	4 key film keyboard
Communication protocol	Command output, continuous output, printing, Modbus RTU
Addressing	Automatic、manual
Calibration method	Weight calibration; Weight-free calibration; Remote calibration
Corner error correcting	Mechanical adjustment, automatic adjustment via software
Digital load cells' information	Available for query and diagnosis, display internal counts of each load cell
Capacity	1-500,000kg (Default 60kg)
Increment size	0.001/0.002/0.005/0.01/0.02/0.05 (Default 0.01)
	0.1/0.2/0.5/1/2/5
	10/20/50
Serial ports	1 way RS232 (isolation), 1 way RS485 (isolation)
Baud rate	1200, 2400, 4800, 9600 (Default), 19200, 38400, 57600
Industrial Bus	Profinet or Ethernet/IP
Enclosure material	Stainless steel
Mounting mode	35mm Din rail-mounted

## Application scenario



\* When used in the hazardous zone (Zone2), the EM291D must be installed in an electric control cabinet with a protection level **equal to or higher than IP54**.

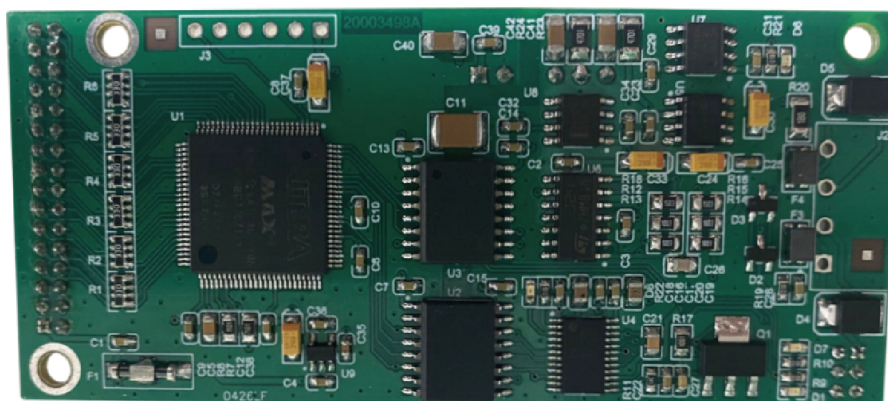
\*\* Cables from the danger zone to the safety zone must be routed through pipes.



Multi material batching weighing parallel mode

Optional board

## EM291D Analog board



Analog board	Feature	Terminal mark	Terminal function description
Analog output	Voltage output	V0	Voltage output (0~5V) Voltage output grounded
		VGND	
	Current output	A0	Current output (4~20mA) Current output grounded
		AGND	