



## Main Features:

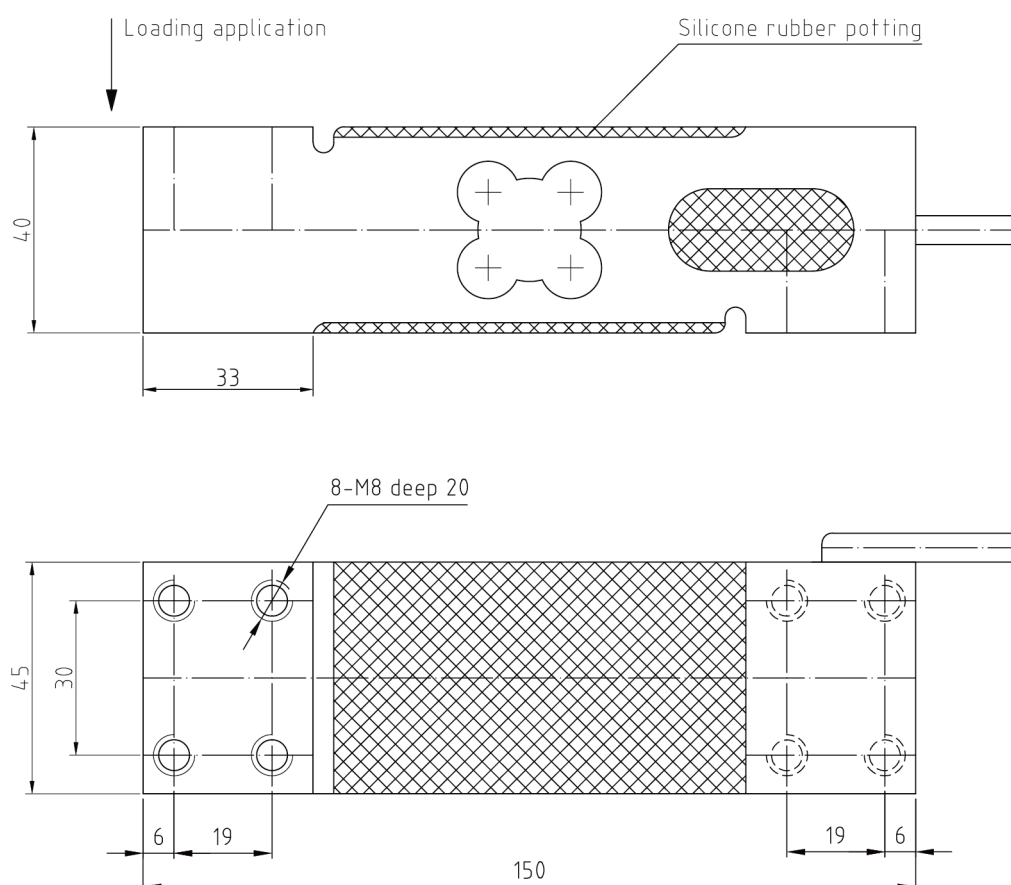
- Material: Aluminum
- Rated Capacities: 50kg~250kg
- OIML R60, NTEP HB44, CE CPA, and RoHS certified
- IP Rating: IP66
- Suitable for pricing scales, bench scales and electronic weighing devices.
- Max platform size: 400\*500mm



## Product description:

SP1245 is a typical and standard aluminum single point load cell that is compact, medium capacity and ideal for a wide range of weighing equipment. Environmentally sealed with potting compound to ensure reliability and durability. The industry standard size and mounting hole configuration makes the SP1245 suitable for new equipment manufacturer or as a replacement for existed weighing equipment. Except for common applications of weighing equipment, it is also can be used for force measurement for controlling.

## Dimensions (mm&inch):



## SP1245 Single Point Load Cell Specifications

Parameter		Units	Specifications	
Model No.			SP1245	
Rated capacity (E <sub>max</sub> )		kg	100 / 200 / 300 / 400 / 500	
Accuracy class <sup>12)</sup>			C3	C6 <sup>4)</sup>
Min. dead load		kg	0	
Rated output		mV/V	2.0 ± 0.2	
Zero balance		% of E <sub>max</sub>	± 2	
Repeatability error		% of AL <sup>3)</sup>	< ± 0.010	< ± 0.005
Creep; 30 minute		% of AL	< ± 0.017	< ± 0.0083
Min. dead load output return (DR); 30 min		% of AL	< ± 0.017	< ± 0.0083
Temp. effect on	Min. dead load output	% of E <sub>max</sub> /°C	< ± 0.0020	< ± 0.0014
	Rated output <sup>2)</sup>	% of AL/°C	< ± 0.0012	< ± 0.0006
Temperature range	Compensated	°C(°F)	-10 to +40 [+14 to +104]	
	Operating		-10 to +50 [+14 to +122]	
	Safe storage		-30 to +70 [-22 to +158]	
Excitation voltage	Recommended	V AC/DC	5 ~ 15	
	Maximum		15	
Terminal resistance	Excitation	Ω	403 ± 5	
	Output		350 ± 3	
Insulation resistance @50VDC		MΩ	> 5000	
Breakdown voltage		V AC	> 500	
Seal type / IP rating			potted silicon sealed / IP66	
Load limit	Safe	% of E <sub>max</sub>	150	
	Ultimate		300	
Material	Spring element		Aluminum, anodizing	
	Cable		Φ5.6; 4-wire; PVC	
Cable length		m	2.0	
Maximum platform size		mm	400*500	
Offer center load error (OIML R76)		% of AL/cm	< ± 0.0025	
Weight; approx		kg	0.7	
Fatigue life		cycles @E <sub>max</sub>	> 1,000,000	
Deflection at E <sub>max</sub> ; approx		mm	< 0.5	
Barometric pressure effect on Zero Output		Vmin/kPa	< 1.0	
Mounting screw	Size/Grade		M8 / 8.8	
	Recommended torque	N.m	100-300kg: 25; 400-500kg: 30	

### Notes:

<sup>1)</sup> Error due to the combined effect of non-linearity and hysteresis

<sup>2)</sup> The sum of errors due to Temperature Effect on Output comply with the requirements of OIML R60 and NIST HB44

<sup>3)</sup> AL = Applied Load

<sup>4)</sup> OIML R60 C6 maximum range 300kg

### Cable Colour Code

Red	+Excitation
Black	-Excitation
Green	+Signal
White	-Signal
Yellow	Shield

Shield not connected to load cell body