

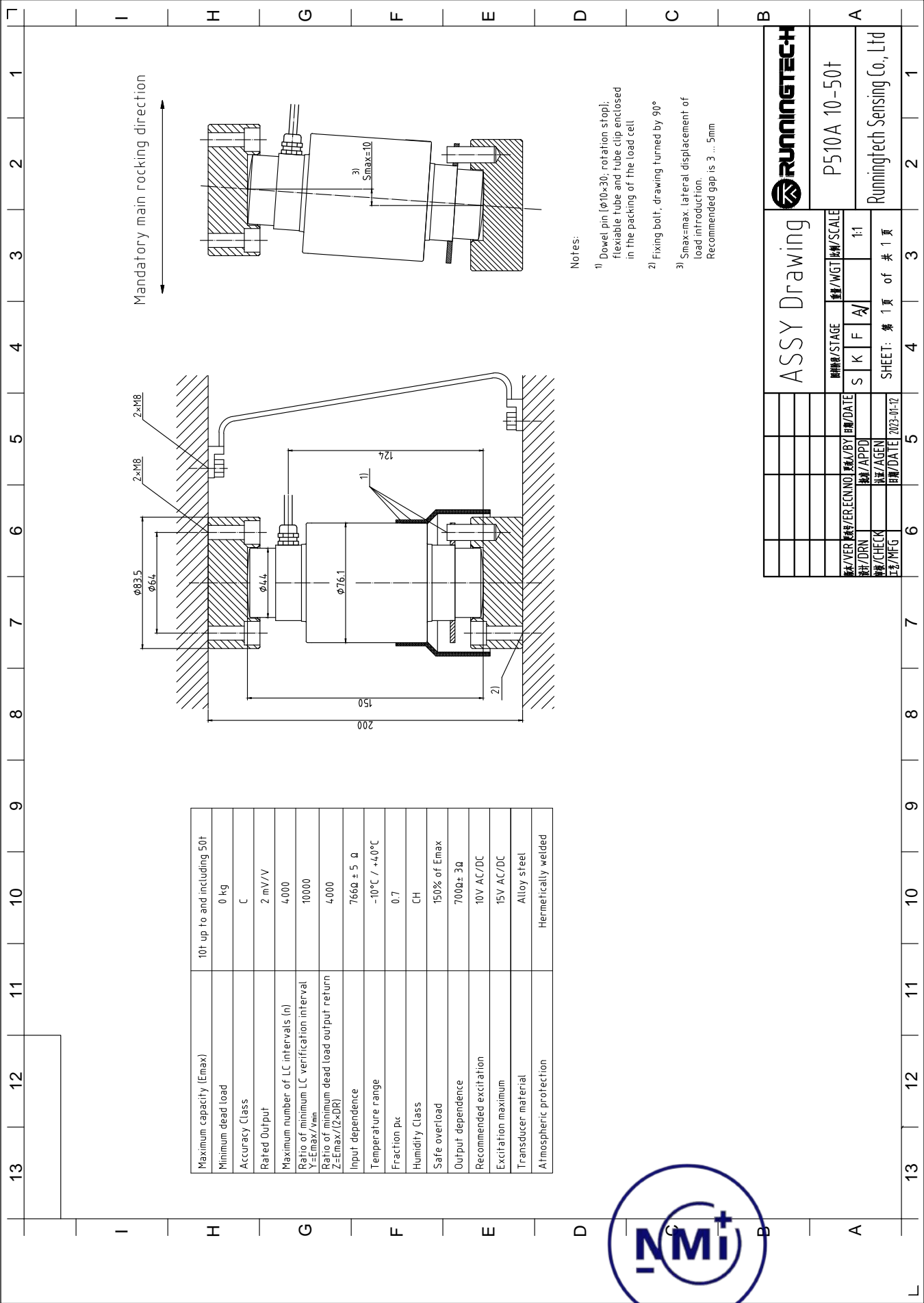


Documentation folder

Number **TC12545-1**
Project number 3603064
Page 1 of 1

Number	Pages	Description	Remark
12545/0-01	1	Load cell outline	-



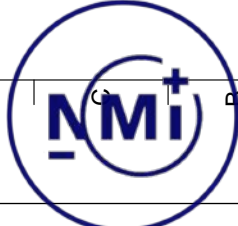


Mandatory main rocking direction →

Maximum capacity (E _{max})	10t up to and including 50t
Minimum dead load	0 kg
Accuracy Class	C
Rated Output	2 mV/V
Maximum number of LC intervals (n)	4000
Ratio of minimum LC verification interval $V = E_{max}/V_{min}$	10000
Ratio of minimum dead load output return $Z = E_{max}/(2 \times DR)$	4000
Input dependence	$766\Omega \pm 5 \Omega$
Temperature range	-10°C / +40°C
Fraction p/c	0.7
Humidity Class	CH
Safe overload	150% of E _{max}
Output dependence	7000±30
Recommended excitation	10V AC/DC
Excitation maximum	15V AC/DC
Transducer material	Alloy steel
Atmospheric protection	Hermetically welded

Notes:

- 1) Dowel pin (Ø10×30; rotation stop); flexible tube and tube clip enclosed in the packing of the load cell
- 2) Fixing bolt; drawing turned by 90°
- 3) S_{max}=max. lateral displacement of load introduction.
Recommended gap is 3 ... 5mm



		P510A 10-50t	
		Runningtech Sensing Co., Ltd	
ASSY Drawing		圖號/STAGE	數量/WGT 比例/SCALE
		S K F A/	1:1
圖號/VER	圖號/ER/ECN/NO	圖號/APPD	圖號/AGEN
圖號/DRN	圖號/APPD	圖號/CHECK	圖號/AGEN
圖號/MFG	圖號/DATE	2023-04-12	