

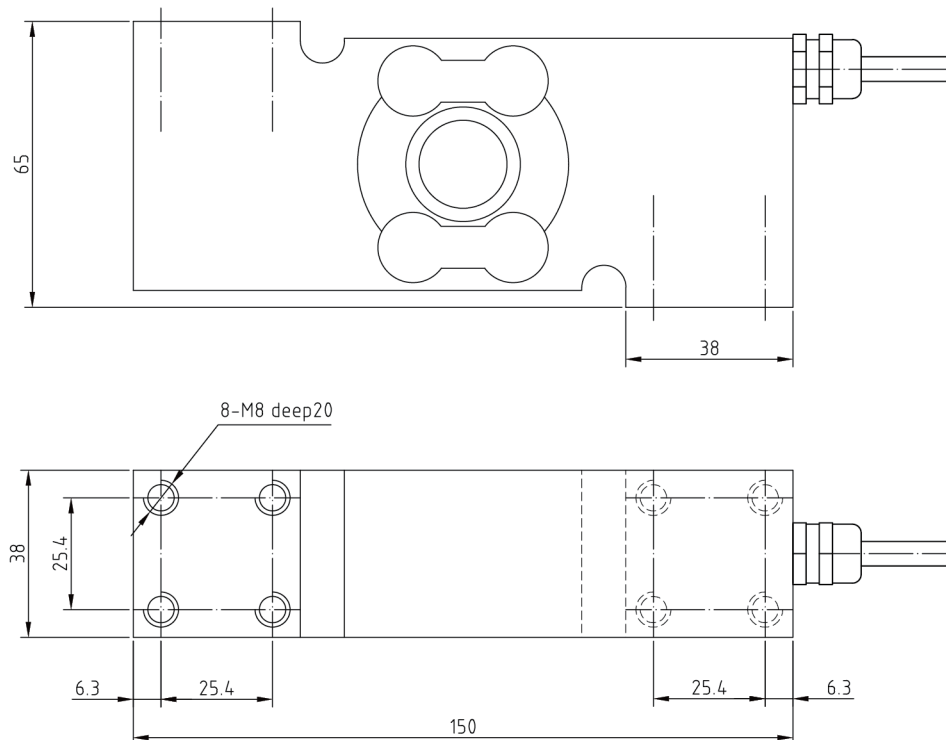
Main Features:

- Material: stainless steel
- Rated Capacities: 50kg~500kg
- OIML R60, NTEP HB44, CPA, CE and RoHS certified
- IP Rating: IP68 / IP69K
- Environmentally sealed by potting special black glue, also strain gauge is double-sealed with another special nanoscale coating.
- Suitable for stainless steel waterproof scales, process weighing control in chemical, food and pharmaceutical industries
- Max platform size: 300*350mm

Product description:

SP544S is a typical and standard stainless single point load cell that is compact, low capacity and ideal for a wide range of weighing equipment. Hermetically sealing ensures reliability and durability. The industry standard size and mounting hole configuration makes the SP544S suitable for new equipment manufacturer or as a replacement for existed weighing equipment.

Dimensions (mm&inch):



SP544S Single Point Load Cell Specifications

Parameter		Units	Specifications	
Model No.			SP544S	
Rated capacity (E _{max})		kg	50 / 100 / 200 / 300	500
Accuracy class ¹⁾²⁾			C3	
Min. dead load		kg	0	
Rated output		mV/V	2.0 ± 0.2	
Zero balance		% of E _{max}	± 1	
Repeatability error		% of AL ³⁾	< ± 0.010	
Creep; 30 minute		% of AL	< ± 0.017	
Min. dead load output return (DR); 30 min		% of AL	< ± 0.017	
Temp. effect on	Min. dead load output	% of E _{max} /°C	< ± 0.0014	
	Rated output ²⁾	% of AL/°C	< ± 0.0012	
Temperature range	Compensated	°C(°F)	-10 to +40 [+14 to +104]	
	Operating		-40 to +65 [-40 to +149]	
	Safe storage		-40 to +80 [-40 to +176]	
Excitation voltage	Recommended	V AC/DC	5 ~ 15	
	Maximum		15	
Terminal resistance	Excitation	Ω	384 ± 5	
	Output		350 ± 3	
Insulation resistance @50VDC		MΩ	> 5000	
Breakdown voltage		V AC	> 500	
Seal type / IP rating			Continuous sealed hermetically IP68 IP69K	
Load limit	Safe	% of E _{max}	150	
	Ultimate		300	
Material	Spring element		stainless steel, electropolishing	
	Cable connector		stainless steel, electropolishing	
	Cable		Φ5.6; 4-wire; PVC	
Cable length		m	3.0	
Maximum platform size		mm	500*500	600*800
Offer center load error (OIML R76)		% of AL/cm	< ± 0.0016	
Weight; approx		kg	2.1	
Fatigue life		cycles @E _{max}	> 1,000,000	
Deflection at E _{max} ; approx		mm	< 0.5	
Barometric pressure effect on Zero Output		Vmin/kPa	< 1.0	
Mounting screw	Size/Grade		M8 / 8.8	
	Recommended torque	N.m	30.0	

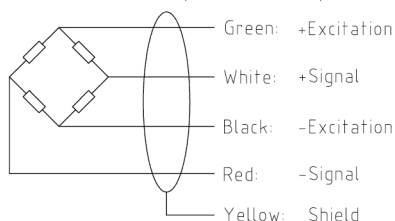
Notes:

¹⁾ Error due to the combined effect of non-linearity and hysteresis

²⁾ The sum of errors due to Temperature Effect on Output comply with the requirements of OIML R60 and NIST HB44

³⁾ AL = Applied Load

Cable Colour Code: (4-wire circuit)



Shield connected to load cell body

Interchangeable Products:

Manufacturer	Model
Mettler-Toledo	SSH