



Main Features:

- Material: Alloy steel
- Rated Capacities: 2.5klb~100klb
- IP Rating: IP68
- Suitable for truck scale, heavy duty hopper scale and other electronic weighing devices.
- High precision by NTEP III L 10000, high reliability.

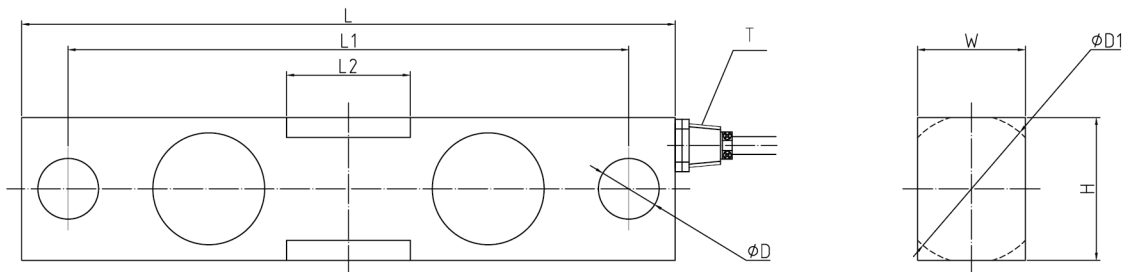


Product description:

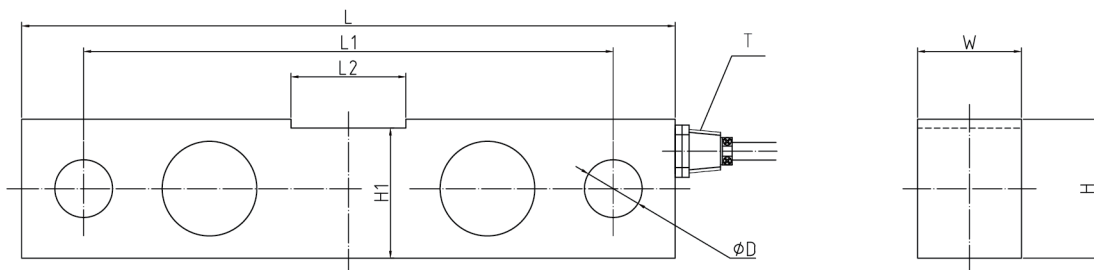
DB916A is a double ended shear beam, both ends loaded, center supported via self-aligning column structure, so that the force can be applied properly. This load cell is suitable for a wide range of truck scales, rail scales and process weighing equipment of tank, bin and hopper scale, etc. It is bolted at both ends.. Fully alloy steel construct, hermetically sealed, which ensure high seals performance of waterproof.

Dimensions (mm&inch):

Capacity: 2.5klb-75klb



Capacity: 100klb



Rated Capacity	L	L1	L2	ϕD	$\phi D1$	W	H	H1	T
lb/inches									
2.5K-5K	7.50	6.26	1.20	0.50	1.24	1.22	1.22	-	1/4-18NPT
10K-35K	8.74	7.50	1.65	0.75	1.99	1.44	1.91	-	1/4-18NPT
50K-75K	13.50	11.50	3.25	1.32	2.99	2.44	2.94	-	1/2-14NPT
100K	18.50	15.00	3.25	1.63	-	2.94	3.94	3.69	1/2-14NPT

DB916A Double Beam Load Cell Specifications

Parameter		Units	Specifications		
Model No.			DB916A		
Rated capacity (E _{max})		klb	2.5 / 5 / 10 / 20 / 35 / 50 / 75 / 100		
Accuracy class ¹⁾²⁾			0.03%		
Min. dead load		lb	0		
Rated output		mV/V	3.0 ± 0.003		
Zero balance		% of E _{max}	± 1		
Repeatability error		% of AL ³⁾	< ± 0.010		
Creep; 30 minute		% of AL	< ± 0.020		
Min. dead load output return (DR); 30 min		% of AL	< ± 0.020		
Temp. effect on	Min. dead load output	% of E _{max} /°C	< ± 0.0014		
	Rated output ²⁾	% of AL/°C	< ± 0.0012		
Temperature range	Compensated		-10 to +40 [+14 to +104]		
	Operating	°C(°F)	-40 to +65 [-40 to +149]		
	Safe storage		-40 to +80 [-40 to +176]		
Excitation voltage	Recommended	V AC/DC	5 ~ 15		
	Maximum		15		
Terminal resistance	Excitation	Ω	766 ± 10		
	Output		700 ± 3		
Insulation resistance @50VDC		MΩ	> 5000		
Breakdown voltage		V AC	> 500		
Seal type / IP rating			Hermetically welded / IP68		
Load limit	Safe	% of E _{max}	140		
	Ultimate		200		
Material	Spring element		Alloy steel nickel plated		
	Cable		Φ6; 4-wire; PVC		
Cable length		m	2.5-5klb	10-35klb	50-75klb; 100klb
			6.0	12.0	16.0
Weight; approx		lb	2.5-5klb	10-35klb	50-100klb
			4.0	7.0	25; 50
Fatigue life		cycles @E _{max}	> 1,000,000		
Deflection at E _{max} ; approx		mm	< 1.5		
Barometric pressure effect on Zero Output		Vmin/kPa	< 1.0		

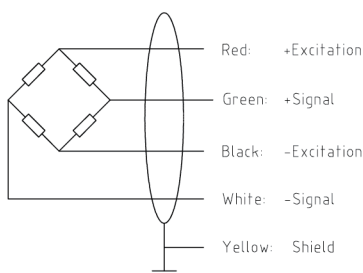
Notes:

¹⁾ Error due to the combined effect of non-linearity and hysteresis

²⁾ The sum of errors due to Temperature Effect on Output comply with the requirements of OIML R60 and NIST HB44

³⁾ AL = Applied Load

Cable Colour Code: (4-wire circuit)



Shield connected to load cell body

Interchangeable Products:

Manufacturer	Model
Vishay Sensortronics	65016
Vishay Celtron	DSR
Vishay Revere transducers	5203
Rice lake	RL75016