



Main Features:

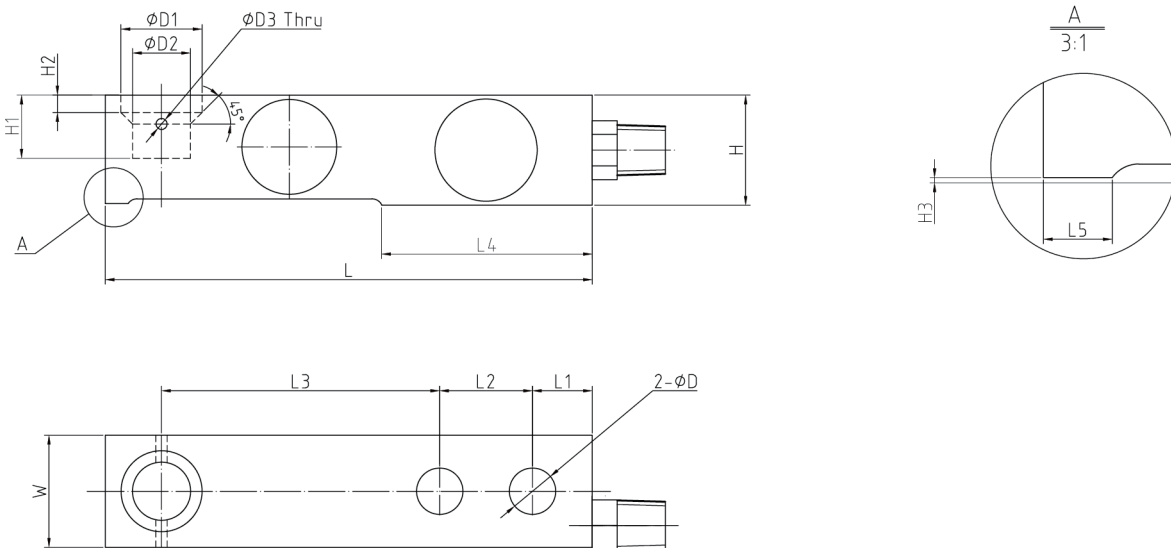
- Material: high-quality stainless steel
- Great long-term stability.
- Rated Capacities: 220kg~4.4t
- OIML R60, NTEP HB44, CE and RoHS certified
- IP Rating: IP68
- Suitable for platform scales, dosing system and process control in chemical, food, pharmaceutical and other industries.
- High precision by OIML R60 C10, high reliability.
- B750SD with 17-4PH material and PEEK strain gauge from HBK.



Product description:

The B550SD series are typical and high precision, low profile single-ended shear beam available in a wide range of capacities. Full stainless steel construction and complete hermetic sealing ensures reliable accuracy and robustness in harsh industrial applications. The B550SD/B750SD are the ideal load cell for high precision weighing platforms with bolts by 2pcs through-holes firmly at end, meanwhile the force would be applied from the self-aligning level-pin settled into the blind hole at the other end vertically.

Dimensions (mm&inch):



Rated Cap.	L	L1	L2	L3	L4	L5	W	H	H1	H2	H3	D	D1	D2	D3
t/mm															
0.22t-1.1t	133.4	16.4	25.4	76.2	57.7	6.4	30.7	30.2	17.3	4.8	0.38	13.0	22.2	15.9	3.1
2.2t	136.6	16.6	25.4	76.2	57.7	-	36.8	36.6	22.9	9.5	-	13.0	22.2	15.9	3.1
4.4t	171.5	16.7	38.1	95.2	73.8	-	42.9	42.9	29.4	11.0	-	19.5	34.9	22.2	3.1

B550SD B750SD Single-Ended Beam Digital Load Cell Specifications

Parameter		Units	Specification				
Model No.			B550SD / B750SD				
Rated capacity (R.C.) ⁴⁾		t	0.22	0.55	1.1	2.2	4.4
Sensitivity at R.C.		d @ R.C.	440,000	550,000	550,000	440,000	440,000
Communication			Controller Area Network (CAN), Encrypted				
Communication rate		kbit/sec	125				
Accuracy class			C3	C6	C10		
Min. dead load		kg	0				
Zero balance		% of E _{max}	± 1				
Y-value			10000	15000	20000		
Repeatability error		% of AL ³⁾	< ± 0.010	< ± 0.005	< ± 0.003		
Creep; 30 minute		% of AL	< ± 0.0167	< ± 0.0083	< ± 0.0050		
Min. dead load output return (DR); 30 min		% of AL	< ± 0.0167	< ± 0.0083	< ± 0.0050		
Temp. effect on	Min. dead load output	% of E _{max} /°C	< ± 0.0016	< ± 0.00107	< ± 0.0008		
	Rated output ¹⁾²⁾	% of AL/°C	< ± 0.00133	< ± 0.00066	< ± 0.0004		
Temperature range	Compensated		-10 to +40 [+14 to +104]				
	Operating	°C(°F)	-40 to +65 [-40 to +149]				
	Safe storage		-40 to +80 [-40 to +176]				
Excitation voltage	Recommended	V AC/DC	12 or 24				
	Minimum / Maximum		7.5 / 28				
Surge protective device			Integral (GDT + TVS)				
Insulation resistance @50VDC		MΩ	> 5000				
Breakdown voltage		V AC	> 500				
Protection	Type		Hermetically welded (submersible)				
	IP rating		IP68/69K				
Load limit	Safe dynamic load		70				
	Safe	% of E _{max}	150				
	Ultimate		300				
Material	Spring element		Stainless steel [B750SD: 17-4 PH]				
	Enclosure		316 stainless steel, laser welded				
	Connectors		Quick-Connect with bayonet lock, 5 Pins, Glass-to-Metal seal				
	Strain gauge		PEEK [B750SD: HBK]				
	Cable		PVC chemically resistant jacket, 6mm O.D. ; 5 Conductors				
Cable length	Cell to cell	m	2 (Typical)				
	Network		No junction boxes				
Weight; approx		kg	0.22-1.1t	2.2t	4.4t		
			1.0	1.4	4.0		
Fatigue life		cycles @E _{max}	> 1,000,000				
Deflection at E _{max} ; approx		mm	< 0.5				
Barometric pressure effect on Zero Output		Vmin/kPa	< 1.0				
Mounting screw	Size/Grade		M12 / A2-70	M12 / A2-70	M18 / A2-70		
	Recommended torque	N.m	98	120	275		

Notes:

¹⁾ Error due to the combined effect of non-linearity and hysteresis

²⁾ The sum of errors due to Temperature Effect on Output comply with the requirements of OIML R60 and NIST HB44

³⁾ AL = Applied Load

⁴⁾ R.C. = Rated Capacity

Interchangeable Products:

Manufacturer	Model
Mettler-Toledo	SLB615D