



Main Features:

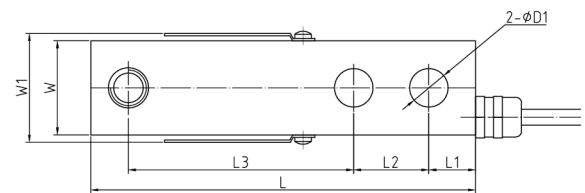
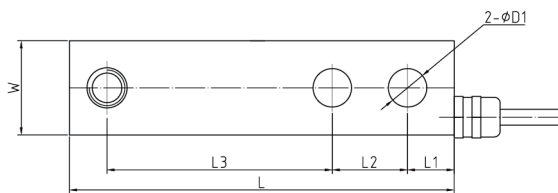
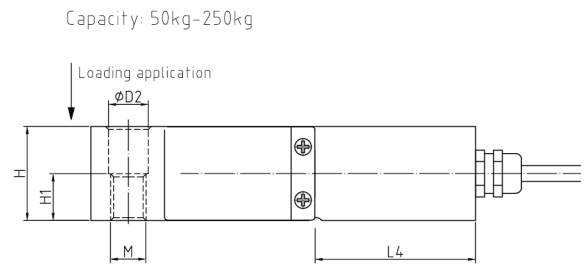
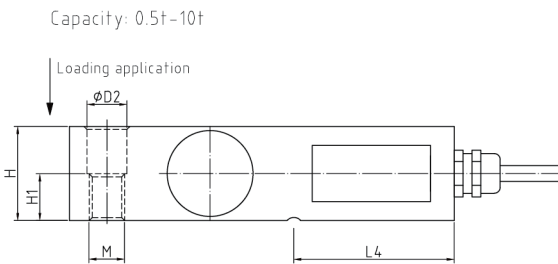
- Material: Alloy steel, stainless steel optional
- Rated Capacities: 100kg~2t
- OIML R60, NTEP HB44, CE and RoHS certified
- IP Rating: IP67, IP68
- Suitable for floor scales, medical bed weighing and other electronic weighing devices.
- High precision by OIML R60 C5, high reliability.



Product description:

The B520 series are atypical and high precision, low-profile single-ended shear beam load cells, which are available in a wide range of capacities. Full alloy steel or stainless steel (optional) construction and complete hermetic sealing ensures reliable accuracy and robustness in harsh industrial applications. The B520 series are the ideal load cells for high precision weighing platforms with bolts by 2 pcs through-holes firmly at end, meanwhile the force would be applied from the self-aligning feet by the other end vertically.

Dimensions (mm&inch):



Rated Capacity	L	L1	L2	L3	L4	D1	D2	H	H1	W	W1	M
kg/mm												
50-250	130.0	15.8	25.4	76.2	54.2	13.0	13.5	31.8	15.8	31.8	36.8	M12×1.75
500-2,000	130.0	15.8	25.4	76.2	54.2	13.0	13.5	31.8	15.8	31.8	-	M12×1.75
3,000-5,000	171.5	19.1	38.1	95.3	77.2	19.5	20.6	38.1	22.0	38.1	-	M18×1.50
7,500-10,000	222.3	25.4	50.8	120.7	101.6	26.0	26.0	50.8	25.4	50.8	-	M24×2.00

B520 Single-Ended Beam Load Cell Specifications

Parameter		Units	Specifications		
Model No.			B520A / B520S		
Rated capacity (E _{max})		kg / t	50; 100; 250 / 0.5; 1; 2; 3; 5; 7.5; 10		
Accuracy class ¹⁾²⁾			C3 C5		
Min. dead load		kg	0		
Rated output		mV/V	2.0 ± 0.002		
Zero balance		% of E _{max}	± 1		
Repeatability error		% of AL ³⁾	< ± 0.010 < ± 0.006		
Creep; 30 minute		% of AL	< ± 0.017 < ± 0.010		
Min. dead load output return (DR); 30 min		% of AL	< ± 0.017 < ± 0.010		
Temp. effect on	Min. dead load output	% of E _{max} /°C	< ± 0.0020 < ± 0.0014		
	Rated output ²⁾	% of AL/°C	< ± 0.0012 < ± 0.0007		
Temperature range	Compensated	°C(°F)	-10 to +40 [+14 to +104]		
	Operating		-40 to +65 [-40 to +149]		
	Safe storage		-40 to +80 [-40 to +176]		
Excitation voltage	Recommended	V AC/DC	5 ~ 15		
	Maximum		15		
Terminal resistance	Excitation	Ω	384 ± 5		
	Output		350 ± 3		
Insulation resistance @50VDC		MΩ	> 5000		
Breakdown voltage		V AC	> 500		
Seal type / IP rating		Cap. ≤250kg: Silicon rubber / IP66			
		Cap. ≥500kg: Hermetically welded / IP68			
Load limit	Safe	% of E _{max}	150		
	Ultimate		300		
Material	Spring element	Alloy steel / Stainless steel			
	Cable	Φ5.6; 4-wire; PVC			
Cable length	m		Cap. ≤2000kg: 3.0		
			Cap. ≥3000kg: 5.0		
Weight; approx	kg		≤2t	3-5t	7.5-10t
			1.0	1.8	4.0
Fatigue life		cycles @E _{max}	> 1,000,000		
Deflection at E _{max} ; approx		mm	< 0.5		
Barometric pressure effect on Zero Output		Vmin/kPa	< 1.0		
Mounting screw	Size/Grade		M12	M18	M24
	Recommended torque	N.m	98	275	700

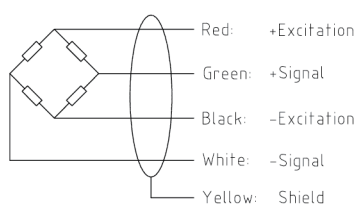
Notes:

¹⁾ Error due to the combined effect of non-linearity and hysteresis

²⁾ The sum of errors due to Temperature Effect on Output comply with the requirements of OIML R60 and NIST HB44

³⁾ AL = Applied Load

Cable Colour Code: (4-wire circuit)



Shield connected to load cell body

Interchangeable Products:

Manufacturer	Model
Vishay TedeA-Huntleigh	3510
Zemic	H8C with 2.0Mv/v output