

EM290

Weight indicator and controller

EM290 weighing indicator is with rail-mounted(35 mm DIN). With thin and small size, it is easy to save the electrical cabinet space. To meet the requirements of industrial weighing and conveying belt scale.



Key features

OLED display

- Certification accuracy: 3000e
- AD sampling rate: 300HZ
- 1.7 "OLED screen
- Special size: 122 mm x 25 mm x 125 mm

Common Communication interface

- Standard isolated RS232 and isolated RS485; CAN, LAN, discrete I/O port, 2 inputs and 2 outputs. Optional analog output, 4-20mA/0-10V;

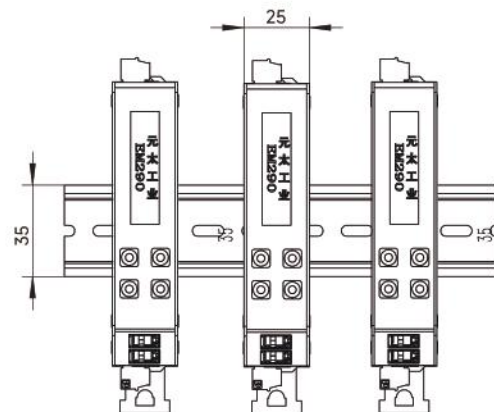
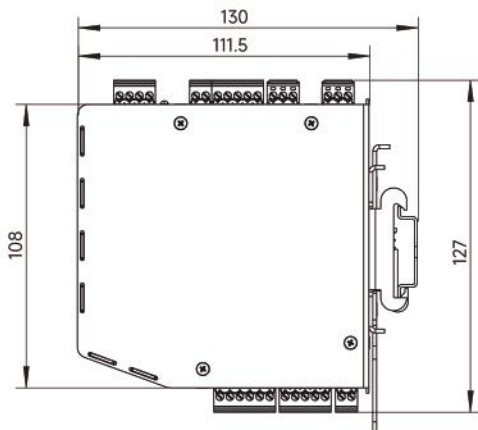
Communication Protocols

- Modbus-RTU, Modbus-TCP, CANopen, command output



Dimensions

Unit: mm

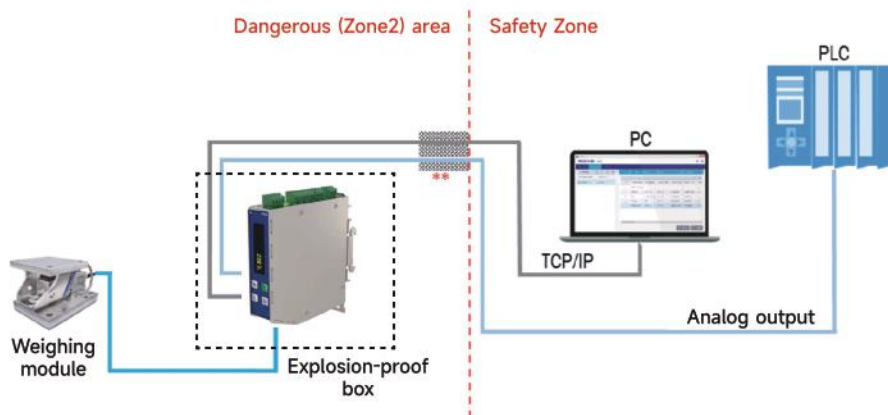


Specifications

Product model	EM290
DC Power	18-36VDC
Usage temperature	-20 ~ +60
Display screen	1.71 inch OLED dot matrix display
Number of verification scale intervals (e)	3000
Number of scale intervals for indicator (d)	100000
Number of sensors	Up to 4 350 ohm load cells (2 or 3mV/V)
AD sampling rate	300Hz
Load cell Excitation	5VDC
Minimum sensitivity	1 μ V/e
Accuracy class	III
KeyPad	4 key film keyboard
Communication protocol	Command output, continuous output, Modbus RTU, Modbus TCP
Calibration method	Weight calibration; Weight-free calibration; Remote calibration
Scale	1
Capacity	1-500,000kg (default 60)
Increment size	0.001/0.002/0.005
	0.01/0.02/0.05 (default 0.01)
	0.1/0.2/0.5
	1/2/5
	10/20/50
Serial ports	1 way RS232/RS485 multiplexing (isolation)
	1 way RS232 (isolation)
	1 way CAN (isolation)
	1 way LAN
Baud rate	1200, 2400, 4800, 9600 (default), 19200, 38400, 57600, 115200
Analog quantity *	1 way 4-20mA or 0-10v
Input/output point	2 inputs (optocoupler isolation) / 2 outputs (relays, transistors)

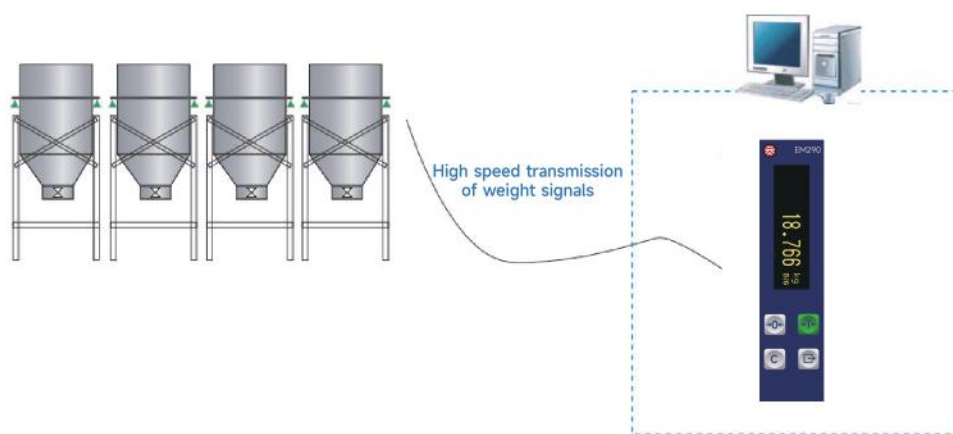
Note: The list marked with * is optional, customers need to purchase separately.

Application scenario



* When used in the hazardous zone (Zone 2), the EM290 must be installed in an electric control cabinet with a protection level equal to or higher than IP54.

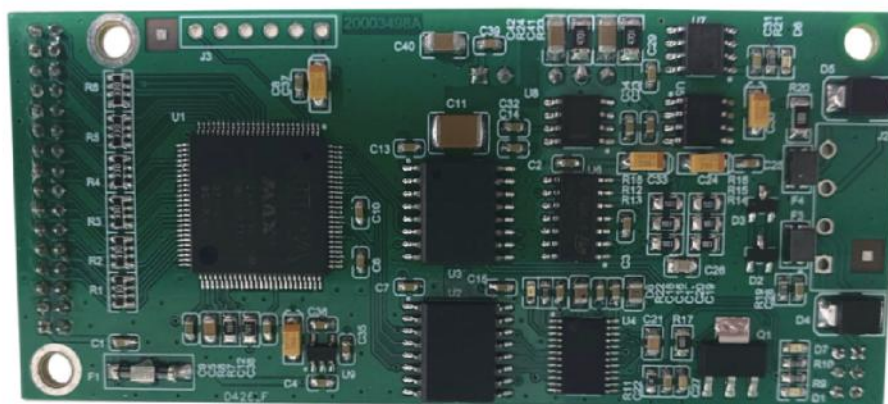
** Cables from the danger zone to the safety zone must be routed through pipes.



Multi material batching weighing parallel mode

Optional board

EM290 Analog board



Analog board	Feature	Terminal mark	Terminal function description
Analog output	Voltage output	V0	Voltage output (0-5V) Voltage output grounded
		VGND	
	Current output	A0	Current output (4-20mA) Current output grounded
		AGND	