

EM211

Weight indicator and controller

EM211 is an industrial-grade process control weight indicator, which is applied in dynamic weighing. Equipped with a variety of PLC bus interfaces, which provides humanized HMI interface, it is convenient for the special weighing applications.



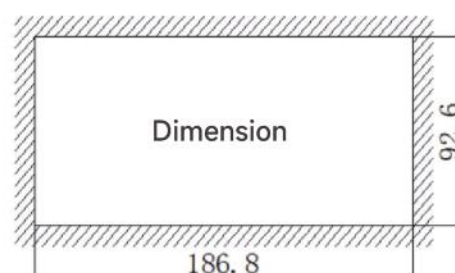
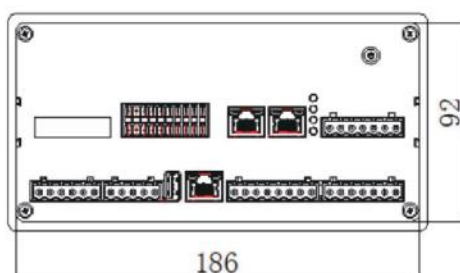
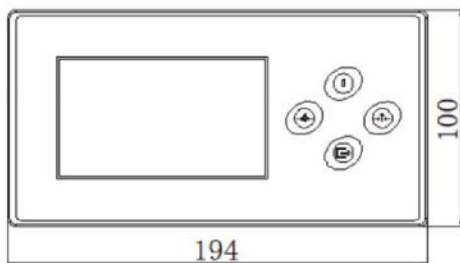
Key features

- Color screen display**
 - Certification accuracy: 6000e
 - 4.3" TFT full color touch screen
- Compact structure**
 - Panel structure convenient to embed in electrical cabinet
- Common Communication interface**
 - Standard isolated RS232 and isolated RS485; CAN, LAN, discrete I/O port, 4 inputs and 4 outputs. Optional analog output, 4-20mA/0-10V; discrete I/O port, 8 inputs and 8 outputs.
- PLC fieldbus interface**
 - Profibus-DP, CC-Link, Profinet, EtherNet/IP, Modbus-RTU, Modbus-TCP
- Typical application**
 - basic weighing, check weighing, filling/dosing, lose-in-weigh application programming.



Dimensions

Unit: mm



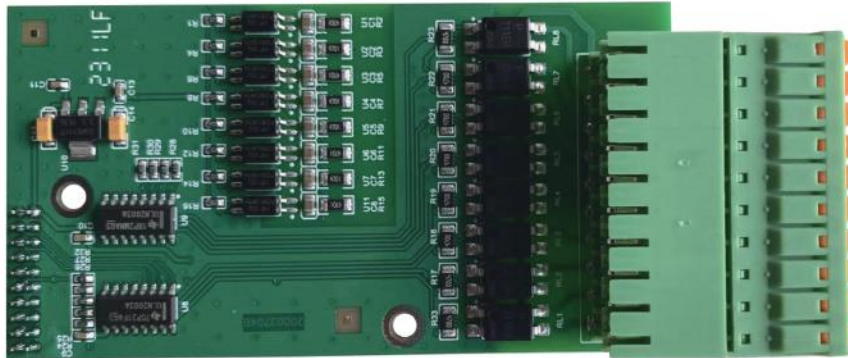
Specifications

Product model	EM211
AC Power	100~240VAC
Operating temperature	-20 ~ +60
Display screen	4.3 "TFT full color screen
Number of verification scale intervals (e)	6000
Number of scale intervals for indicator (d)	100000
Number of sensors	Up to 6 350 Ohm load cells (2 or 3mV/V)
AD sampling rate	1000Hz
Load cell Excitation	5VDC
Minimum sensitivity	0.5 μ V/e
Accuracy class	III
KeyPad	4 key control
Communication protocol	Command output, continuous output, Modbus RTU, Modbus TCP
Calibration method	Weight calibration; Weight-free calibration; Remote calibration
Scale	1
Capacity	1-500,000kg (default 60)
Increment size	0.0001/0.0002/0.0005
	0.001/0.002/0.005
	0.01/0.02/0.05 (default 0.01)
	0.1/0.2/0.5
	1/2/5
	10/20/50/100
Baud rate	1200, 2400, 4800, 9600 (default) ,19200, 38400, 57600, 115200
DIO interface	4 inputs (optocoupler isolation) /4 outputs (relays, transistors)
Serial	1 way RS485 (isolation)
	1 way RS232 (isolation)
	1 way CAN (isolation)
Ethernet interface※	Port rate 10Mbps/100Mbps adaptive
analog quantity ※	1 way 4-20mA or 0-10v
DIO interface expansion board※	8 inputs (optocoupler isolation) /8 outputs (relays, transistors)
Communication interface board※	PROFINET、EtherNet/IP、Profibus-DP、CC-Link

Note: The list marked with ※ is optional, customers need to purchase separately.

Optional board

EM211 DIO board



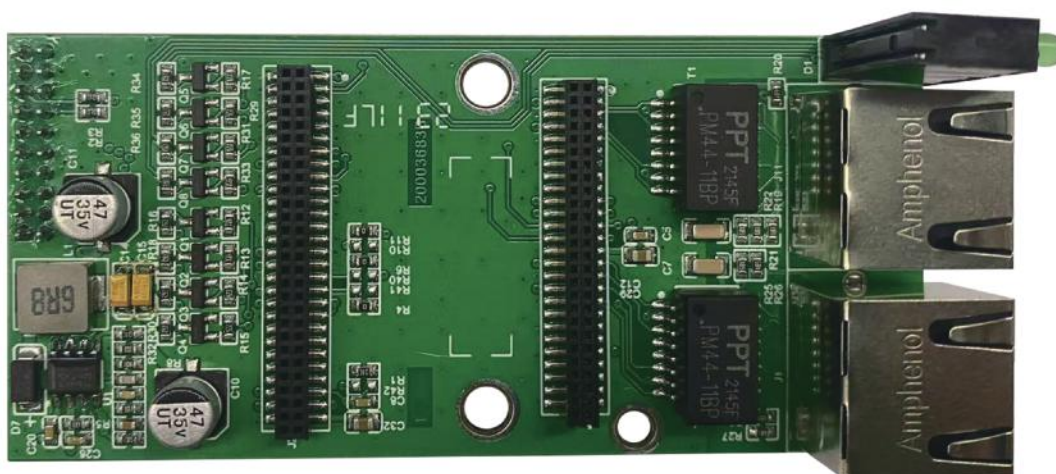
DIO board	Feature	Terminal mark	Terminal function description	Electrical performance			
Input/output	Extended input/output signal interface	COM	Extended input Com	Input point mode: DC Input voltage: 24VDC Input current: 5mA			
		IN5	Extended input 5				
		IN6	Extended input 6				
		IN7	Extended input 7				
		IN8	Extended input 8				
		IN9	Extended input 9				
		IN10	Extended input 10				
		IN11	Extended input 11				
		IN12	Extended input 12				
		COM	Extended input Com				
		COM	Extended output Com			Input point mode: DC Current: 2A/1point Voltage: 250VAC,30VDC Maximum load: 10W	
		OUT5	Extended output 5				
		OUT6	Extended output 6				
		OUT7	Extended output 7				
		OUT8	Extended output 8				
		OUT9	Extended output 9				
		OUT10	Extended output 10				
		OUT11	Extended output 11				
		OUT12	Extended output 12				
COM4	Extended output Com						

EM211 Analog board



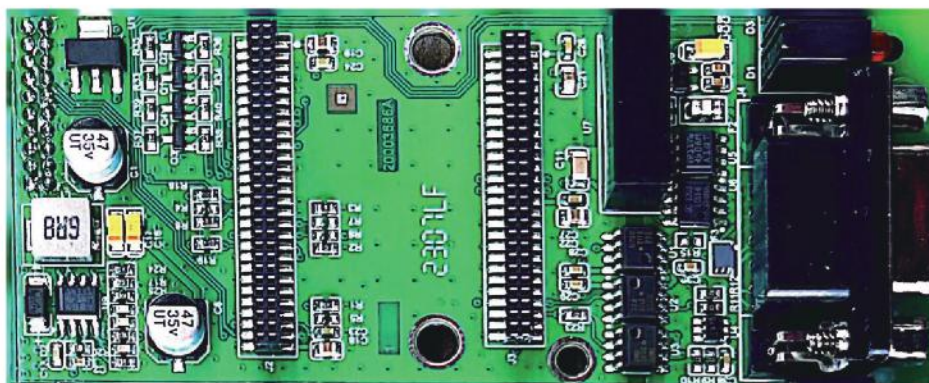
Analog board	Feature	Terminal mark	Terminal function description	Terminal function
Analog output	Voltage output	V0	Voltage output	Output range: 0-10V DC Load: $\geq 1k\Omega$
		VGND	Voltage output grounded	
	Current output	A0	Current output	Output range: 0-20mA DC Load: $\leq 500\Omega$
		AGND	Current output grounded	

EM211 Profinet/EtherNet/IP board



Profinet board	Feature	Terminal mark	Terminal function description	Electrical performance
Network connection	Communication	J1/J11	Profinet protocol and Siemens PLC communication	Port rate: 10Mbps/100Mbps self-adaptation

EM211 Profibus-DP



Profibus-DP	Feature	Terminal mark	Port function description	Electrical performance
RS232/485 output	Communication	J4	Profinet protocol and Siemens PLC communication	Port rate: 9.6K-12Mbps

EM211 CC-Link board



CC-Link board	Terminal function description	Terminal mark	Feature	Terminal function
Communicate with PLC via CC-Link protocol	Compatible with CC-Link networks, indicator is identified as a CC-Link remote device by the PLC.	DA	Communication wire A	Port rate: 156kbps-10Mbps
		DB	Communication wire B	
		DG	Digital grounded	
		SHIELD	Shielded grounded	
		FG/PE	Enclosure grounded	