



Key feature:

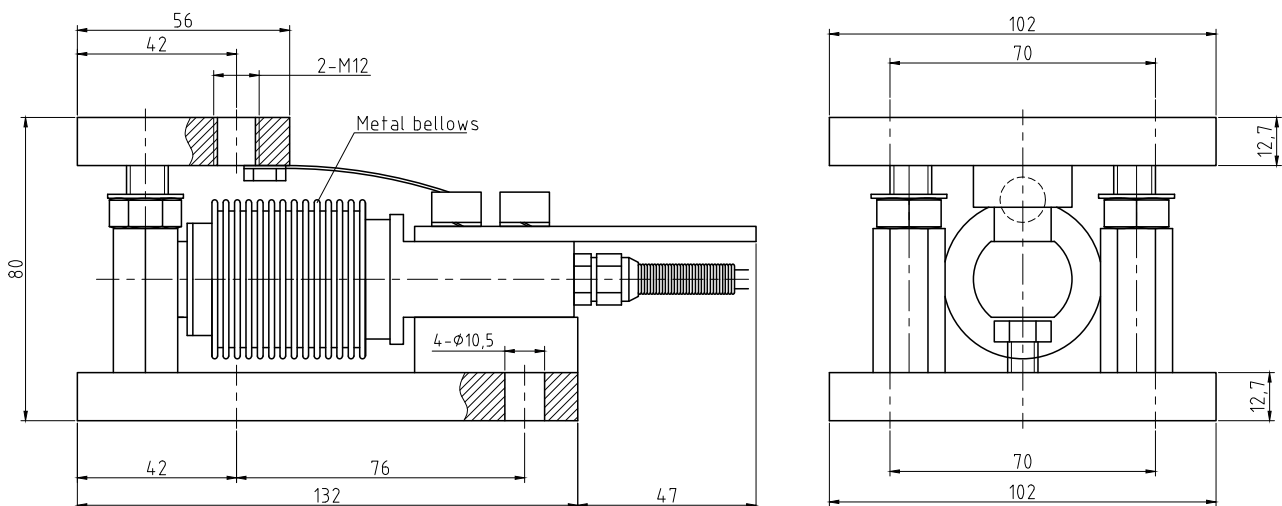
- Compact and easy installation.
- Upper plate with blind hole to be loaded.
- Adjustable height screw against overload and overturn.
- Self-reset vertical force with ball between upper and bottom load cup to ensure good weighing repeatability
- Alloy steel and stainless steel optional.
- Assembled with single-ended shear beam W510S



Product description:

M-W510S is a typical weigh module assembled with W510A load cell, which is designed for static weighing system, such as hopper, silo, vessel and tank weighing systems. Capacity is from 10kg to 500kg, suitable for small weighing system.

Dimensions (in mm& lb):



M-W510S Weighing Module Specifications

Parameter	Units	Specification	
Model No.		M-W510S	
Load Cell		W510S	
Rated capacity (E _{max})	kg	10; 20; 30; 50; 100; 200; 300; 500	
Rated output	mV/V	2.0 ± 0.002	
Combined error ¹⁾²⁾	% of E _{max}	< ± 0.017	
Repeatability error	% of AL ³⁾	< ± 0.010	
Creep; 30 minute	% of AL	< ± 0.017	
Min. dead load output return (DR); 30 min	% of AL	< ± 0.017	
Temp. effect on	Min. dead load output	% of E _{max} /°C	< ± 0.0023
	Rated output ²⁾	% of AL/°C	< ± 0.0020
Temperature range	Compensated	°C(°F)	-10 to +40 [+14 to +104]
	Operating		-30 to +65 [-22 to +149]
	Safe storage		-40 to +80 [-40 to +176]
Excitation voltage	Recommended	V AC/DC	5 ~ 15
	Maximum		15
Terminal resistance	Excitation	Ω	382 ± 5
	Output		350 ± 3
Insulation resistance @50VDC	MΩ	>5000	
Seal type / IP rating		Hermetically welded / IP68	
Load limit	Safe	% of E _{max}	150
	Ultimate		300
Cable length	m	3.0	

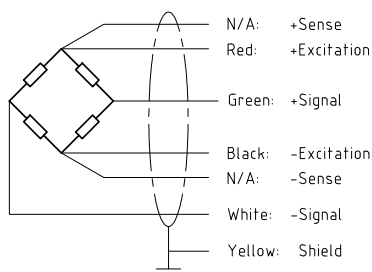
Notes:

¹⁾ Error due to the combined effect of non-linearity and hysteresis

²⁾ The sum of errors due to Temperature Effect on Output comply with the requirements of OIML R60 and NIST HB44

³⁾ AL = Applied Load

Cable Colour Code: 4-wire [Optional: 6-wire]



Shield connected to load cell body