



Key feature:

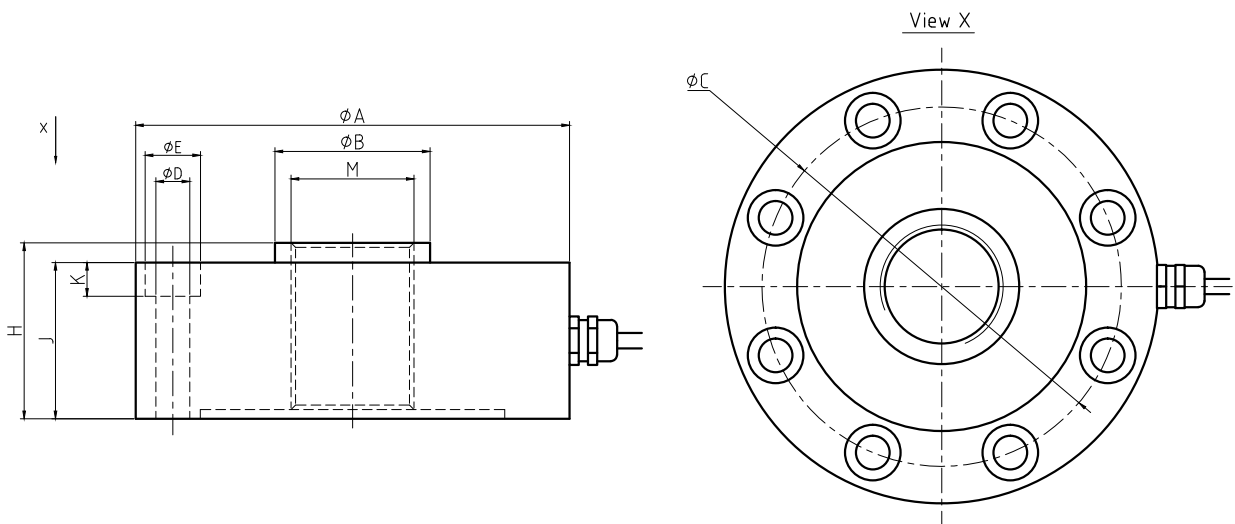
- Material: Alloy steel
- Rated Capacities: 1t-60t
- ISO 376 testing criterion.
- IP Rating: IP68
- Suitable for force measurement device and safety controlling against overload.
- High precision by ISO 376, 0.5, 1, 2, high reliability.



Product description:

R530A has a multi-beam internal design ensuring repeatable, high accuracy sensing even in case of off-center side forces. Its design and construction of smart sensing make it an ideal load cell for a wide range of test and force measurement either as a independent sensor or embedded in production/assembly machinery. Available in a wide range of standard capacities from 10KN to 600KN; the R530A is designed for both tension and compression force measurement. Complete alloy-steel construction and hermetic sealing and high performance even in applications requiring in excess of 1 million load cycles., which ensures long-term stability and durability.

Dimensions (in mm& lb):



Rated Capacity	φA	φB	φC	φD	φE	H	J	K	M
t/mm									
1t-5t	110	35	95	7	11	47	42	10	M24×1.0
10t-30t	141	50.4	116.8	11	18	57.2	50.8	11	M40×1.5
50t-60t	182	63	150	17	26	57.5	51	22	M50×3.0

R530A Load Cell Specifications

Parameter		Units	Specification	
Model No.			R530A	
Rated capacity (E _{max})		t	1t; 2t; 3t; 5t; 10t; 20t; 30t; 50t; 60t	
Min. dead load		kg	0	
Rated output		mV/V	3.0 ± 0.1%	
Zero balance		% of E _{max}	± 1	
Combined error ¹⁾²⁾		% of E _{max}	< ± 0.05	
Repeatability error		% of AL ³⁾	< ± 0.02	
Creep; 30 minute		% of AL	< ± 0.03	
Min. dead load output return (DR); 30 min		% of AL	< ± 0.03	
Temp. effect on	Min. dead load output	% of E _{max} /°C	< ± 0.002	
	Rated output ²⁾	% of AL/°C	< ± 0.002	
Temperature range	Compensated	°C(°F)	-10 to +40 [+14 to +104]	
	Operating		-30 to +65 [-22 to +149]	
	Safe storage		-40 to +80 [-40 to +176]	
Excitation voltage	Recommended	V AC/DC	5 ~ 15	
	Maximum		20	
Terminal resistance	Excitation	Ω	760 ± 10	
	Output		700 ± 3	
Insulation resistance @50VDC		MΩ	>5000	
Breakdown voltage		V AC	>500	
Seal type / IP rating			Hermetically welded / IP68	
Load limit	Safe	% of E _{max}	150	
	Ultimate		200	
Material	Spring element		Alloy steel	
	Cable		Φ6; 4-wire; PVC	
Cable length	m		1t ... 30t	50t ... 60t
			6	12
Weight; approx	kg		1t~5t	10t~30t
			2.5	4.0
Fatigue life		cycles @E _{max}	>1,000,000	
Deflection at E _{max} ; approx		mm	<0.5	

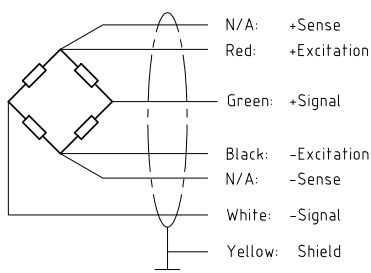
Notes:

1) Error due to the combined effect of non-linearity and hysteresis

2) The sum of errors due to Temperature Effect on Output comply with the requirements of OIML R60 and NIST HB44

3) AL = Applied Load

Cable Colour Code: 4-wire [Optional: 6-wire]



Shield connected to load cell body