



Key feature:

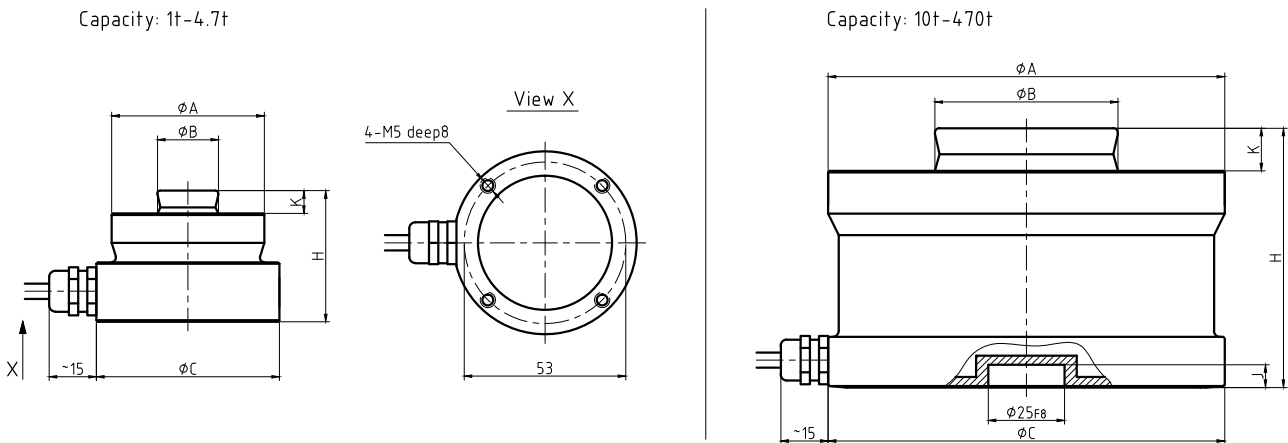
- Material: Stainless steel
- Rated Capacities: 1t-470t
- OIML R60, NTEP HB44, CE and RoHS certified
- IP Rating: IP68
- Suitable for truck scales and giant hopper scale.
- High precision by OIML R60 C3, high reliability.



Product description:

R520S is a large range capacity compression load cell, capacity is from 1t to 470t. It is widely suitable for applications in truck scale and heavy-duty process weighing industry, it is with smooth electro-polished surfaces so that it is easy to be cleaned, and is ideally suited to weighing applications in clean-in-place/sterilize-in-place environments. Full stainless steel constructure, completely hermetically sealed by laser. Also it is designed with mandrel with self-aligning arc point to receive force vertically to ensure the high force accuracy.

Dimensions (in mm& lb):



Rated Capacity	1t	2.2t	4.7t	10t	15t	22t	33t	47t	68t	100t	150t	220t	330t	470t
t/mm														
φA	50	50	50	75	75	75	95	130	130	150	150	225	225	270
φB	20	20	20	30	30	30	40	60	60	70	70	100	100	100
φC	60	60	60	75	75	75	95	130	130	150	150	225	225	270
H	43	43	43	50	50	50	65	75	85	90	100	130	145	170
J	-	-	-	7	7	7	7	7	7	7	7	10	10	10
K	7.5	7.5	7.5	6.5	6.5	6.5	10	14	14	16	16	24	24	28

R520S Load Cell Specifications

Parameter		Units	Specification				
Model No.			R520S				
Rated capacity (E _{max})		t	1t ... 470t				
Min. dead load		kg	0				
Rated output		mV/V	2.85 ± 0.1%				
Zero balance		% of E _{max}	± 1				
Combined error ¹⁾²⁾		% of E _{max}	< ± 0.05				
Repeatability error		% of AL ³⁾	< ± 0.02				
Creep; 30 minute		% of AL	< ± 0.03				
Min. dead load output return (DR); 30 min		% of AL	< ± 0.03				
Temp. effect on	Min. dead load output	% of E _{max} /°C	< ± 0.002				
	Rated output ²⁾	% of AL/°C	< ± 0.002				
Temperature range	Compensated	°C(°F)	-10 to +40 [+14 to +104]				
	Operating		-30 to +65 [-22 to +149]				
	Safe storage		-40 to +80 [-40 to +176]				
Excitation voltage	Recommended	V AC/DC	5 ~ 30				
	Maximum		60				
Terminal resistance	Excitation	Ω	1530 ± 10 [Optional: 4400 ± 50]				
	Output		1400 ± 3 [Optional: 4000 ± 10]				
Insulation resistance @50VDC		MΩ	> 5000				
Breakdown voltage		V AC	> 500				
Seal type / IP rating			Hermetically welded / IP68				
Load limit	Safe	% of E _{max}	150				
	Ultimate		200				
Material	Spring element		Stainless steel				
	Cable		Φ6; 4-wire; PVC				
Cable length	m	1t ... 15t	22t ... 47t	68t ... 470t			
		6	12	16			
Weight; approx	kg	1t~4.7t	10t~22t	33t	47t~68t	100~150t	220~470t
		0.7	1.3	2.1	4.6	8.0	
Fatigue life		cycles @E _{max}	> 1,000,000				
Deflection at E _{max} ; approx		mm	< 1.0				

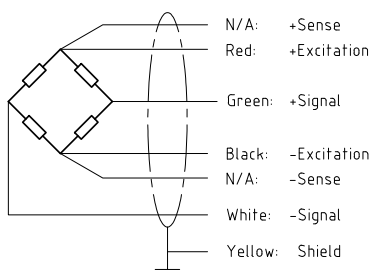
Notes:

¹⁾ Error due to the combined effect of non-linearity and hysteresis

²⁾ The sum of errors due to Temperature Effect on Output comply with the requirements of OIML R60 and NIST HB44

³⁾ AL = Applied Load

Cable Colour Code: 4-wire [Optional: 6-wire]



Shield connected to load cell body

Interchangeable Products:

Manufacturer	Model
HBM	RTN